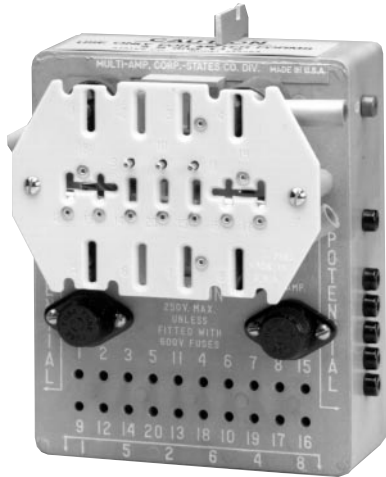


E-Z Test™ 99800 Series Meter Test Jacks



- **Standard of the industry**
- **Unique, simplified connection system**
- **Tough, glass-impregnated polycarbonate**

DESCRIPTION

The 99800 Series E-Z Test™ Meter Test Jacks are designed to increase safety and to simplify testing of socket-type watt-hour meters. They feature dead-front construction and a unique, simplified connection system. Four types are available for safe, convenient and efficient field testing of virtually all commonly used socket-type meters.

Molded from a tough, glass-impregnated polycarbonate, E-Z Test Meter Test Jacks will withstand the rigors of daily field use. Time-proven, lever-actuate cams are used to firmly connect the meter blades to the test jack. A husky bypass bus is incorporated to handle customer loads, even at extended-range meter installations that use the new 320-ampere, self-contained meters.

APPLICATIONS

Insertion of the test jack into the meter socket restores service to the customer and provides access to the line for input power to run the test. Testing can then proceed without further disturbing customer service. The dead-front construction means that no accessible part of the test jack is "live" until the tester chooses. All connections to the meter under test, rotating standard and phantom loads are made before the test lead energizing them is connected.

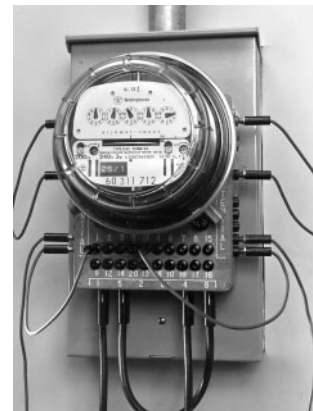
The test jack designed for testing 13-terminal, transformer-rated meters has KYZ termination so that meter contact devices and end devices such as totalizers, printout demand meters or magnetic tape recorders can be tested simultaneously without removing the meter from the test jack.

All test jacks incorporate fuses for protection in the potential circuits. Each type of test jack is available with fuses -Y rated for 250 volts maximum, or for applications such as testing 277/480 meters, with fuses rated 600 volts maximum.

FEATURES AND BENEFITS

- Increases operator safety
- Simplified testing of socket-type watt-hour meters
- Safe, convenient and efficient way to test virtually all socket-type meters
- Inserting the test jack into meter socket restores service and provides access to the line.
- Dead-front construction means that no accessible part of the test is live until the tester chooses.

Each test jack has appropriate jumpers and plugs for connecting test leads.



SPECIFICATIONS AND ORDERING INFORMATION

FOR TESTING THESE METERS	Form No.	600 V Max. Cat. No.
Single-phase, two-wire self-contained	1S	99805A
Single-phase, three-wire self-contained	2S	99805A
Transformer-rated, two-wire	3S	99805A
Transformer-rated, three-wire	4S	99805A
Combination two- and three-wire network	19S, 20S, 21S	99805A
Two-stator, three-wire network	12S, 25S	99805A
Single-stator, three-wire network	23S	99805A
Single-stator network	22S	99805A
Weight: 4 lb, 15 oz (2.24 kg) Dimensions: 8.125 H x 6.75 W x 5.625 D in. (206 H x 172 W x 143 D mm)		
FOR TESTING THESE SEVEN-TERMINAL, SELF-CONTAINED METERS	Form No.	600 V Max. Cat. No.
Two-stator, three-phase, four-wire wye	14S	99806A
Two-stator, three-phase, four-wire delta	15S	99806A
Three-stator, three-phase, four-wire wye	16S	99806A
Three-stator, three-phase, four-wire delta	17S	99806A
Weight: 5 lb, 2 oz (2.32 kg) Dimensions: 8.125 H x 6.75 W x 5.625 D in. (206 H x 172 W x 143 D mm)		
FOR TESTING THESE 13-TERMINAL, TRANSFORMER-RATED METERS	Form No.	600 V Max. Cat. No.
Two-stator, three-phase, four-wire wye	6S	99807A
Two-stator, three-phase, four-wire delta	8S	99807A
Three-stator, three-phase, four-wire wye	9S, 10S	99807A
Three-stator, three-phase, four-wire delta	11S	99807A
Weight: 5 lb, 2 oz (2.32 kg) Dimensions: 8.125 H x 6.75 W x 5.625 D in. (206 H x 172 W x 143 D mm)		
FOR TESTING THESE EIGHT-TERMINAL METERS	Form No.	600 V Max. Cat. No.
Two-stator, three-phase, three-wire transformer-rated	5S	99808A
Two-stator, three-phase, three-wire self-contained	13S	99808A
Two-stator, two-phase, three- or four-wire transformer-rated	5S	99808A
Two-stator, two-phase, three- or four-wire self-contained	13S	99808A
Weight: 4 lb, 13 oz (2.18 kg) Dimensions: 8.125 H x 6.75 W x 5.625 D in. (206 H x 172 W x 143 D mm)		

UK
Archcliffe Road Dover
CT17 9EN England
T +44 (0) 1304 502101
F +44 (0) 1304 207342

UNITED STATES
4271 Bronze Way
Dallas TX75237-1088 USA
T 800 723 2861 (USA only)
T +1 214 330 3203
F +1 214 337 3038

OTHER TECHNICAL SALES OFFICES
Valley Forge USA, Toronto CANADA,
Mumbai INDIA, Trappes FRANCE,
Sydney AUSTRALIA, Madrid SPAIN
and the Kingdom of BAHRAIN.

Registered to ISO 9001:2000 Reg no. Q 09290
Registered to ISO 14001 Reg no. EMS 61597

EZ99800_DS_en_V10

www.megger.com
Megger is a registered trademark