

## MCRN-1200

### Corona Camera

#### Overview:

**Marmonix MCRN-1200** is an innovative NDT - Non Destructive Testing equipment, which detects, pinpoints and documents flash-arc corona and arcing partial discharge camera. Being with high sensitivity, it is a power tool to detect UV emission in full daylight with high signals from faraway and nearby sources.

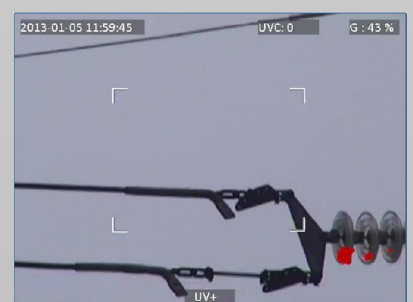
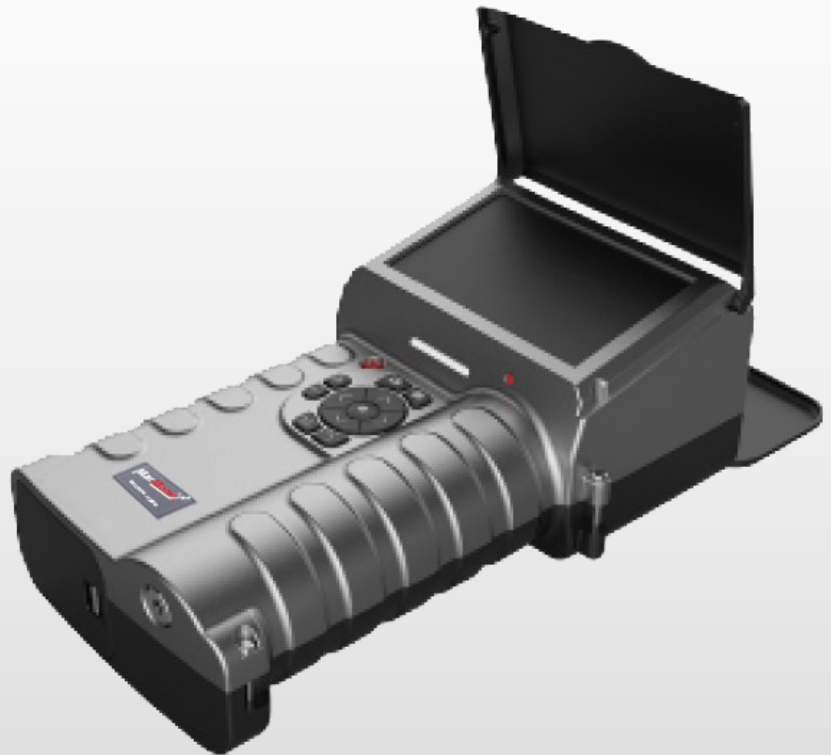
**MCRN-1200** is an ideal predictive maintenance device for overhead transmission lines and high voltage substations. It is widely used in Transmission line inspection, electrical utilities, HV research institutes, HV Electrical component inspection, HV panel inspection, service providers, laboratories and so on.

#### Features:

- High sensitivity to UV signals
- Precise location of corona emitting sources
- LED UV events alarm
- Built-in GPS
- Report software for documentation
- Minimum Discharge Detection: 1 pC@10m
- Minimum UV Detection:  $2.2 \times 10^{-18}$  watt/cm<sup>2</sup>
- Media download: Via Wifi, Bluetooth, card reader

#### Application:

- Transmission line inspection
- Electrical utilities inspection
- HV substations
- HV research institutes
- HV electrical component inspection



UV - Optical Properties	
Minimum Discharge Detection	1pC@15m(~0.75pc@10m)
Minimum RIV Sensitivity	3.6 dBμV @ 1MHz
Minimum UV Detection	2.05x10 Watt/cm Typical
Spectral Range	240-280nm
Detector Life Span	No degradation
Field of View (HxV)	8° x6° (abt10diagonal)
UV Zoom	2x
Focus	Full manual and auto focus for UV and visible channels
Focus Range	1.5m - infinity
Visible - Optical Properties	
Minimum Visible Light Sensitivity	0.1 Lux
Spectral Range	Visible range, Full color
Zoom	20x Optical, 12x Digital
Focus	Manual and auto focus
Focus Range	1m - infinity
Display Performance	
Display	Transflective sun proof color LCD 4.3"
resolution	800X480 pixels
Image Modes	Visible/UV/Combine
UV/Visible Overlay Accuracy	Deviation < 1 milliradian
Status Indicators	Battery, Memory, Gain, Counting, Date, Selected functions, Focus, inspection mode, Corona color, GPS (access), Temp & Humidity (access)
User Configuration Settings	Corona color (White, Red , Green, Yellow, purple), Time, Sleep mode, LI, LCD parameters
Control & Operation	
Working Modes	Real time, standby, off
Control Inputs	Keypad and hot keys
Status Indicator	On/Off button LED
Flashlight	Yes
Media capture & storage	
Digital Storage	Removable SD card 8GB
Storage Capacity	1000+ images or >1 hr video/8GB
Media Download	Via Card Reader, WIFI, USB, WIFI SD Card
Video Format	H. 264/AVI
Image Format	JPG
Audio	External microphone
Playback	Video pictures Audio
Software Update	Via files downloaded from website to SD Card
Output Interface	
Video Out (NTSC), GPS, TRH	Standard
SD Card	Yes
RS232	Yes
GPS and TRH	Standard
Communication	
WIFI	Yes
Bluetooth	Yes
Power supply	
Power Consumption	9.5 watt
Battery Type	Rechargeable Li-Ion
Battery Run Time	5 hours
External Supply	9-16V 12VA - Car or mains adapter
Mains Adaptor	12Vdc 3.8A
Environmental	
Operating Temp	-15°C to 55°C
Storage Temp	-25°C to 60°C
Humidity	Up to 90%, non condensating
Encapsulation	IP54, Certified
Safety standard	CE, IEC1010-1
Physical characteristics	
Size (LxWxH)	240mm×125mm×90mm
Weight	1.6kg
Mounting Points	Standard 1/4" thread tripod mount
Package	
Standard	Corona camera MCRN-1200, AC power adapter, 2pcs Li-ion battery, Charger, SD card, SD card reader, SDMI Cable, USB Cable, Corona base reporting SW, Temp& Relative humidity meter, GPS, Car Power adaptor, CD-ROM (software & manual), Warranty card, Strap, Transportation case