

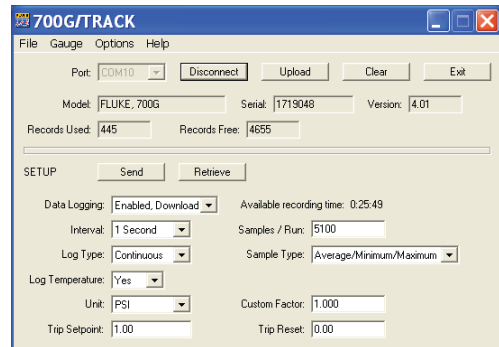
Fluke 700G Series Precision Pressure Test Gauges

Technical Data



Features

- Precision pressure measurement from 15 psi/1 bar to 10,000 psi/690 bar
- Accuracy to 0.05 % of full scale
- Easy to use, rugged construction for reliable performance
- CSA; Class 1, Div 2, Groups A-D rating
- ATEX: rating: II 3 G Ex nA IIB T6
- Combine with the 700PTPK or 700HTPK pump kits for a complete pressure testing solution for up to 600 psi with the PTP-1 pneumatic pump and up to 10,000 psi with the HTP-2 hydraulic pump
- Log up to 8493 pressure measurements to memory (requires 700G/TRACK software)
- Three-year warranty



Fluke-700PTPK Pneumatic Test Kit

- Combine with any Fluke-700G Series Gauge, 1,000 psi or less, to make a complete pressure testing kit
- Generate pressure up to 600 psi, 40 bar with the 700PTP-1 test pump.
- Connect the 700G Series gauge directly to the included PTP-1 hand pump
- Includes hoses and adapters for connecting to the pressure device to be tested
- Hard case protects pump and gauge and allows gauge to remain connected to the pump

Fluke-700HTPK Hydraulic Test Kit

- Combine with any Fluke-700G Series Gauge, 1,000 psi range or greater, to make a complete pressure testing kit
- Generate pressure up to 10,000 psi, 690 bar with the included 700HTP-2 test pump
- Connect the 700G Series gauge directly to the HTP-2 hand pump
- Includes 700HTH-1 hose kit and adapters for connecting to the pressure device to be tested
- Hard case protects pump and gauge and allows gauge to

700G/TRACK Logging Software

- Use with 700G Series gauges to perform real time data logging to a PC
- Download logging configurations to the 700G Series gauges for a remote logging event
- Configure logging event reading rate, duration and measurement units
- Upload measurements logged remotely and display or export measurements
- Includes communication cable for connection to a PC

Specifications

| Model | Range | Resolution | Accuracy | Burst Pressure |
|--------|---|-------------------------|----------------------------------|-----------------------|
| 700G04 | -14 psi to 15 psi -.97 bar to 1 bar | 0.001 psi 0.0001 bar | Positive pressure ± 0.05 % FS | 500 psi 34 bar |
| 700G05 | -14 psi to 30 psi -.97 bar to 2 bar | 0.001 psi 0.0001 bar | | 500 psi 34 bar |
| 700G06 | -12 psi to 100 psi -.83 bar to 6.9 bar | 0.01 psi 0.0001 bar | | 1000 psi 69 bar |
| 700G27 | -12 psi to 300 psi -.83 bar to 20 bar | 0.01 psi 0.001 bar | | 2000 psi 138 bar |
| 700G07 | -12 psi to 500 psi -.83 bar to 34 bar | 0.01 psi 0.001 bar | | 2000 psi 138 bar |
| 700G08 | -14 psi to 1000 psi -.97 bar to 69 bar | 0.1 psi 0.001 bar | | 10000 psi 690 bar |
| 700G29 | -14 psi to 3000 psi -.97 bar to 200 bar | 0.1 psi 0.01 bar | | 10000 psi 690 bar |
| 700G30 | -14 psi to 5000 psi -.97 bar to 340 bar | 0.1 psi 0.01 bar | | 10000 psi 690 bar |
| 700G31 | -14 psi to 10000 psi -.97 bar to 690 bar | 1 psi 0.01 bar | | 15000 psi 1035 bar |
| | | | | Vacuum ± 0.1 % FS |

Temperature compensation: 15 °C to 35 °C (59 °F to 95 °F) to rated accuracy
For temperatures from -10 °C to 15 °C and 35 °C to 55 °C, add .003 % FS/°C

Media compatibility

- 15, 30 psi: any clean dry non-corrosive gas
- 100, 300, 1000 psi: any liquids or gases compatible with 316 stainless steel and start above 1000 psi :any non-flammable, non-toxic, non-explosive, non-oxidizing liquid or gas compatible with 316 stainless steel.

Mechanical specifications

| | |
|---------------------|--|
| Dimensions (HxWxD) | 12.7 cm x 11.4 cm x 3.7 cm (5 in x 4.5 in x 1.5 in) |
| Pressure connection | ¼ in NPT Male |
| Housing/Weight | Cast ZNAl/0.56 kg (1.22 lb) with holster |
| Display | 5-1/2 digits, 16.53 mm (0.65 in) high 20-segment bar graph, 0 to 100 % |
| Power | Three AA alkaline batteries |
| Battery life | 1,500 hours without backlight (continuous on), 2,000 hours at slow sample rate |

Ordering information

Model

FLUKE-700G04 Pressure Gauge, 15 PSIG
FLUKE-700G05 Pressure Gauge, 30 PSIG
FLUKE-700G06 Pressure Gauge, 100 PSIG
FLUKE-700G27 Pressure Gauge, 300 PSIG
FLUKE-700G07 Pressure Gauge, 500 PSIG
FLUKE-700G08 Pressure Gauge, 1,000 PSIG
FLUKE-700G29 Pressure Gauge, 3,000 PSIG
FLUKE-700G30 Pressure Gauge, 5,000 PSIG
FLUKE-700G31 Pressure Gauge, 10,000 PSIG
700G/TRACK Data logging software and cable
FLUKE-700PTPK Pneumatic test pump kit, 0 TO 600 PSI/40 BAR
FLUKE-700HTPK Hydraulic test pump kit, 0 TO 10,000 PSI/690 BAR

Included accessories (Gauges)

Manual on CD-ROM in 14 languages
 NIST traceable certificate of calibration
 1/4" NPT to 1/4" ISO adapter