

DIGITAL INFRARED THERMOMETER
MODEL NO. BE700/BE900



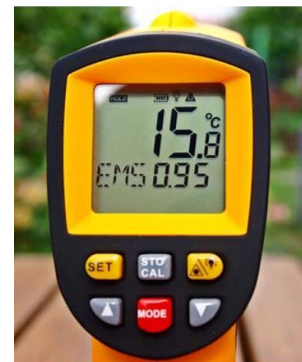
APPLICATION

This compact and easy to use Digital Infrared (IR) Thermometer is indeed a very useful item for measuring surface of hot, hazardous or hard to reach objects without touching them. Just aim with Laser Point, press the button and get the temperature readings in °C or °F within second.

- * Heat ventilation air-conditioning and refrigeration
- * Automotive industry
- * Electrical & power voltage/current inspection field
- * Water treatment and water quality inspection
- * Environmental monitoring
- * Marine and weather
- * Gas industry
- * Food processing industry

KEY FEATURES

- Memory storage up to 12 data
- Wide Temperature range:BE700: -50 ~ 700°C (-58 ~ 1292°F);BE900: -50 ~ 900°C (-58 ~ 1652°F)
- D:S = 12:1, maximum distance from the target object
- Highly accurate and reliable
- Adjustable Emissivity from 0.10 ~ 1.00 (Preset at 0.95)
- Spectral Response from 8~14µm
- Easy to read Large screen display
- 4 levels Battery Power Indication
- Auto Power Off when idle
- Data Hold Function
- Access surface temperature in 1 second
- Easy switch to °C or °F
- Maximum (MAX), Minimum (MIN), Average (AVG) and Difference (DIF) temperature functions
- Adjustable High / Low Temperature Alarm
- Fast response time (0.5 seconds), highly accurate and reliable
- Measure hazardous or inaccessible objects (high-voltage parts)
- Pre-Calibrated in Factory
- Ergonomically shaped hand grip
- Laser Target Pointer ON/OFF selection
- Backlight ON/OFF selection
- With CE marking, meets EU safety, health and environmental requirements



DIGITAL INFRARED THERMOMETER MODEL NO. BE700/BE900

SPECIFICATIONS

- * Temperature Range: BE700: -50 ~ 700°C (-58 ~ 1292°F) ; BE900: -50 ~ 900°C (-58 ~ 1652°F)
- * Resolution: 0.1°C/°F
- * Accuracy: -50~0°C (-58~32°F): ±3°C (±5°F); 0~700°C/900 °C (32~1292°F/1652°F): ±1.5 °C (±2.7 °F) or ±1.5%
- * Repeatability: 1% or 1°C
- * Response Time: 500ms, 95% response
- * Spectral Response (Wavelength): 8~14μm
- * Distance to Spot Ratio (D:S): 12:1
- * Emissivity: 0.95 (fixed) , 0.10~1.00 (user adjustable)
- * Laser Power: <1 mW
- * Selectable between °C / °F
- * Data Hold Function
- * Laser Target Pointer Selection
- * Backlight Display Selection
- * Auto Power Shut Off
- * Operating Environment: Temperature: 0~40°C (32~104°F)
- * Relative Humidity: 10~95% R.H. non-condensing, up to 30°C
- * Storage Temperature: -20~60°C (-4~140°F)
- * Power Supply: 1 x 9V Battery (included)
- * Battery Life: 22 hours (Non-Laser Mode), 12 hours (Laser Mode)



ACCESSORIES

- * 1 x User Manual
- * Standard Packaging Box
- * FREE 1x9V battery

BESTONE INDUSTRIAL LTD.

Add: RM. 304,3 Building, C Block,
Yifeng Huayuang – 7020 No. Caitian North Rd.
Futian District, Shenzhen, Guangdong, China

Tel: +86 755 82952326, Fax: +86 755 82952326
Web: www.bestone-meter.com ,email: liu@bestone-meter.com