



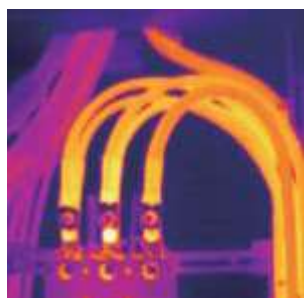
DT-980 / DT-982

Features:

- 80 x 80 pixels resolution detector (DT-980)
160 x 120 pixels resolution detector (DT-982)
- FOV: 17°x17°(DT-980); FOV: 19°x25°(DT-982)
- Digital camera with visible light (5 Megapixels)
- Temperature range: -20°C to 350°C (-4°F to 752°F)
- IR image / Visual image / picture-in-picture mode
- LED Flashlight
- Built-in menu for Emission-setting
- Audio record
- 3 points measurement (center point, Max / Min. Temperature)
- Automatic marking of hot and cold point
- 100 MB Built-in memory and 8GB micro SD card
- Lithium Polymer battery & power supply for approx. 4 hours runtime
- Compatible Software

Small, light, easy to use:

The DT-980 (80x80), DT-982 (160x120) InfraRed Camera are designed to make your work more comfortable, productive and effective. The 80x80 pixels (160x120 pixels for DT-982) detector enable a real-time Image-capture at 50Hz. The temperature range is from -20°C to 350°C (-4°F to 662°F). Other functions like 32X continuous zoom, 3 different Image modes: IR image / Visual image / picture-in-picture, voice comment recording and text annotation on images, automatically detect of the Hot/Cold spot, etc. USB connectivity allows the Infrared Thermal Camera to send images and data to PC or mobile devices.



Specifications	DT-980	DT-982
Imaging and optical data		
IR resolution	80x80 pixels	160x120 pixels
Focal Plane Array (FPA) / Spectral range	Uncooled microbolometer / 8–14 μ m	
Focal length	9mm	9mm
Field of View (FOV)	17°x17°	19°x 25°
Minimum focus distance	0.5m	0.5m
Spatial resolution	3.78mrad	2.78mrad
Thermal sensitivity/NETD	< 0.1°C @ +30°C (+86°F) / 100mK	< 0.1°C @ 30°C (86°F) / 100 mK
Image frequency	50Hz	
Focus	Manual	
Zoom	1-32x continuous, digital zoom	
Image presentation		
Image modes	IR image, visual image, picture in picture	
Picture in Picture	IR area on visual image	
Color palettes	Iron/rainbow/grey/grey inverted	
Measurement		
Object temperature range	-20 to 150°C (-4 to 302°F)	-20 to 150°C (-4 to 302°F)
	0 to 350°C (32 to 662°F)	0°C to 350°C (32 to 662°F)
Accuracy	$\pm 2^\circ\text{C}$ ($\pm 3.6^\circ\text{F}$) or $\pm 2\%$ of reading	

Measurement analysis	
Spot	Center Spot, Auto hot or cold markers
Set-up	
laser	< class2
Language selection	English, Chinese, French, German, Spanish
Storage of videos/images	
Inside Memory	100M bytes, About 80pictures or one minute video record
Storage media	8Gbytes Micro SD card
Video storage format	Standard MPEG-4, 1280x960@30fps, on memory card > 60 minutes
Image storage format	Standard JPEG, including measurement data, on memory card > 6000 pictures

Digital camera	
Built-in visible light digital camera	5 Megapixels
Built-in digital lens data	59°
Data communication interfaces	
Interfaces & Video out	USB-mini, audio, HDMI
USB	Data & Live video transform between camera and PC or smartphone
Power system	
Battery / Input voltage	Li-ion battery, 4 hours operating time / DC 5V
Charging system / Power management	In camera (AC adapter) /Automatic shutdown