

G9701 INDUSTRIAL THERMAL CAMERA



The thermographic handheld camera is specially designed for temperature measurement in transformer substation. The 3.5-inch touchscreen displays in 4 modes (Thermal, Fusion, Picture in Picture and Optical). It helps you quickly find the fault by giving accurate temperature measurement of high temperature targets in the environment.



Key Features

160 × 120 resolution (thermal),
and 8 MP resolution (optical)

DDE, 3D DNR, and adaptive AGC

640 × 480 resolution 3.5" LCD
touch display

Up to five hours continuous running

Functions

Thermography

Device detects the real-time temperature, and display it on the screen.

Storage

Device is equipped with built-in memory module to store recorded videos, captured snapshots, and important data.

Fusion

Device can display fusion of thermal view and optical view.

Palette and Alarm

Device supports multiple palettes, and you can set the palette mode according to the alarm function

LED Light

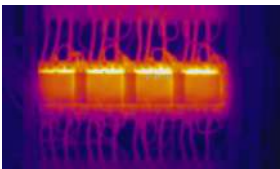
LED light supplement makes the device a torch in required scenarios.

Laser Light Supplement

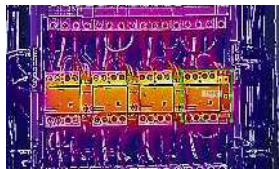
Long-distance laser light supplement to point the thermography target.

Image Display Modes

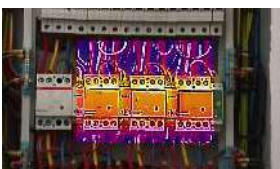
Thermal



Fusion



PIP



Optical



Desktop and Mobile Software Available

- Supports Wi-Fi connection and WLAN hotspot.
- Edit and optimize images for simpler analysis.
- Generate detailed reports.

G9701 INDUSTRIAL THERMAL CAMERA

Thermal Module	Image sensor	Uncooled Focal Plane Arrays
	Resolution	25Hz: 160 × 120
	Pixel Pitch	17μm
	Response waveband	8μm to 14μm
	NETD	< 40 mk (@ 25 °C,F#=1.0)
	Field of View	25° × 18.7°
	Focal length	6.2 mm (Manual focus)
	IFOV	2.74 mrad
	Aperture	F 1.1
Optical Module	Picture Resolution	Configurable: 2 MP, 5 MP, 8 MP
	Video Resolution	640 × 480
Image Display	Monitor	640 × 480 resolution 3.5" LCD touch display
	Palettes	Black hot, White hot, Red hot, Rainbow, Ironbow, Fusion, Rain
	Digital Zoom	Thermal : 1×, 2×, 4×
	Thermal / Optical	Thermal/Optical/Fusion image/Picture in picture
	Picture in Picture	Support Thermal View in Optical View
	Fusion	Support (Thermal View and Optical View Combined)
	Record Video	Support on-board video recording
Thermography	Rules	Max. Temperature; Min. Temperature; Center Temperature; Custom Point/Line/Area Thermography
	Range	-20 °C to 550 °C (-4 °F to 1022 °F)
	Accuracy	Max (±2 °C, ±2%)
Battery	Battery Type	Dismountable and rechargeable Li-ion Battery
	Battery Operating Time	5 hours in normal temperature, with Wi-Fi, Bluetooth, and supplement light off. 4 hours in normal temperature, with Wi-Fi, Bluetooth, and supplement light on.
Functions	Laser Light	Support (Point to the thermography target)
	Storage	Built-in memory module (16 G)
	Photo	Thermal/Optical/Fusion image
	Video	Thermal/Optical/Fusion image
	Lighting	Support
	Wi-Fi	Support

G9701 INDUSTRIAL THERMAL CAMERA

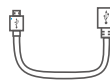
Accessories



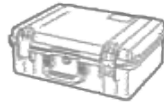
User Manual (x1)



Power Adapter Kit



USB Cable (x1)



Professional Carry Case (x1)



Wrist Strap (x1)



Battery (x2)



Charging Dock (x1)

Product Applications



HVAC Inspection



Switchgear Inspection



Solar Panel Inspection



Electric Panel Inspection



Industrial Motor Inspection



Building Inspection

Ordering Information

Gazelle G9701 160 x 120 Industrial Thermal Imager; 25 Hz

Included

Thermal Camera; AC power supply (including universal adapters);
USB Cable; Hard Carry Case; Wrist Strap; User Manual
Batteries: Charging Dock Station

Available by free download: Gazelle Desktop Software & User Manual

Visit Gazelle Industrial website or contact your local Gazelle representative for more information.