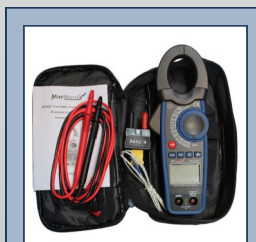
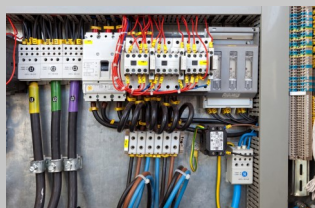


MCA-207

Clamp Meter, 1000A AC DC True RMS



- Package includes:
- Test Leads
 - Soft case
 - Temperature probe
 - 9V battery
 - User's manual



Overview:

This meter measures AC/DC Voltage, AC/DC Current, Resistance, Capacitance, Frequency, Diode Test, Continuity, Type k thermocouple thermometer. Proper use and care of this meter will provide many years of reliable service.

Features:

- True RMS measurement of AC Current and AC voltage
- Large 4000 count LCD display with a bar graph and a bright white LED backlight.
- Wide measuring range from 0.01A AC/DC up to 1000A AC/DC
- Measures AC and DC Voltage up to 600 volts
- Measures resistance from 0.01Ω up to 40MΩ
- Capacitance measurement up to 40 mF
- Temperature measurement from -40°C to +1000°C and -40 F to +1832 F.
- Designed to the international safety standard IEC 61010 CAT III 600v / CAT II 1000v. Pollution degree 2.
- Auto Power Off after approximately 20 minutes to conserve battery life.
- Continuity Buzzer and Diode Test.
- Frequency measurement up to 4KHZ.
- Peak Hold to record the minimum and maximum readings for current and voltage.
- Data Hold switch used to freeze reading on display

Function	Range	Accuracy
AC Current	40.00 A	± (2.8 % + 10 digits)
	400 .0A	± (2.8 % + 8 digits)
	1000 A	± (3.0 % + 8 digits)
DC Current	40.00 A	± (2.8 % + 10 digits)
	400 .0A	± (2.8 % + 8 digits)
	1000 A	± (3.0 % + 8 digits)
DC Voltage	400.0 mV	± (0.8% + 2 digits)
	4.000 V	
	40.00 V	± (1.5% + 2digits)
	600 V	± (2.0 % + 2 digits)
AC Voltage	400.0mV	± (1.0% + 10 digits)
	4.000 V	
	40.00 V	± (1.5% + 8 digits)
	600 V	± (2.0% + 8 digits)
Resistance	400.0 Ω	± (1.0% + 4 digits)
	4.000KΩ	
	40.00KΩ	± (1.5% + 2 digits)
	400.0KΩ	
	4.000MΩ	± (2.5% + 5 digits)
	40.00MΩ	± (3.5% + 10 digits)
	4.000nF	±(6.0% +30digits)
Capacitance	40.00nF	±(5.0% +20digits)
	400.0nF	
	4.000μF	±(3.0% +5digits)
	40.00μF	
Frequency	400.0μF	±(4.0% +10digits)
	4.000 mF	±(4.5% +10digits)
	40.00 mF	±(5.0% +10digits)
Temp	4.000KHZ	±(1.5% +2 digits)
	-40.0 to 1000°C	±(2.5%+3°C)
	-40.0 to 1832°F	±(2.5%+5°F)