

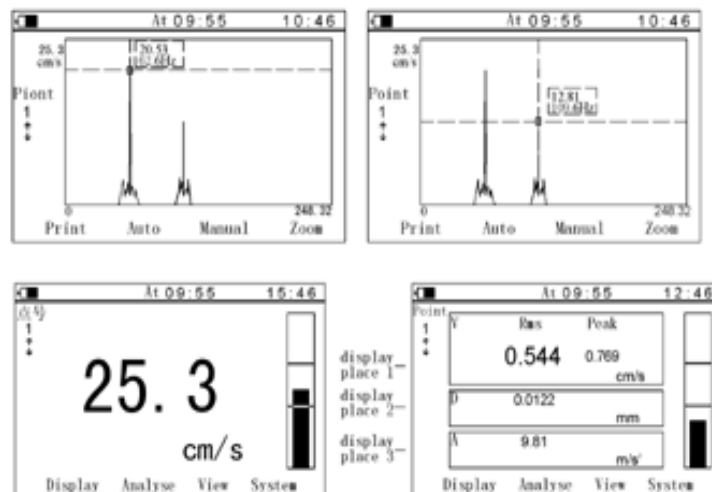
## TV300

发布日期：2010-10-27



### Features:

- Advanced vibration tester with large measuring range
- Three display modes:
  - Special mode: displaying acceleration, velocity and displacement
  - Common mode: displaying one of acceleration, velocity and displacement
  - Spectrum mode: displaying vibration spectrum
- large memory up to 1550 readings and 25 spectrums
- Easy diagnosis: alarm is sounded when vibration go over limit set, and get into spectrum mode
- Testing results and spectrum can be printed out with optional micro-printer
- Can be connected with PC by special software for further analyses of vibration



### Technical Specification

Testing range	Acceleration	0.1m/s <sup>2</sup> -392m/s <sup>2</sup> (peak value)
	Velocity	0.01cm/s-80cm/s (virtual value)
	Displacement	0.001mm-18.1mm (peak to peak value)
Frequency range	Acceleration	10Hz-200Hz, 10Hz-500Hz, 10Hz-1KHz, 10Hz-10KHz
	Velocity	10Hz-1KHz
	Displacement	10Hz -500Hz
Power	Li-ion rechargeable battery	
Display	LCD, 320 × 200 pixels with backlight	
Working temperature	0°C - 40°C	
Tolerance	± 5%	
Dimensions	171mm × 78.5mm × 28mm	
Weight	230g	

### Standard delivery

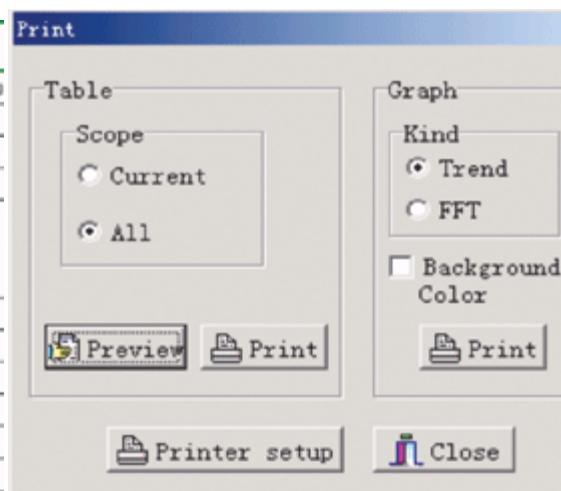
- Main unit
- Accelerometer probe
- Magnetic base
- Charger
- Protection pocket
- TIME certificate
- Instruction manual
- Warranty card

### Optional accessory

- Needle groupware
- Long needle
- Printer TA230
- Dataview software

### Dataview software for TV300

TV300 Data List				
Point	Time	Acceleration(g)	Velocity(cm/s)	Displacement(mm)
1	2004-5-7 AM 09:34:59	104.0465	10.9249	1.0965
1	2004-5-12 AM 09:41:48	355.5555	37.3333	3.6444
1	2004-5-11 AM 09:41:38	278.7465	27.1980	2.9224
1	2004-5-10 AM 09:44:03	213.4925	22.9114	2.0829
1	2004-5-9 AM 09:01:16	173.1944	17.7222	1.6914
1	2004-5-8 AM 09:52:54	140.0274	13.3653	1.3664
1	2004-5-1 AM 09:38:42	76.4592	7.5227	0.7645
1	2004-5-6 AM 09:09:48	91.1111	9.7778	0.9889
1	2004-5-5 AM 09:38:44	91.6796	9.1627	0.9168
1	2004-5-4 AM 09:25:37	82.035	7.4623	0.8209
1	2004-5-3 AM 09:37:39	74.0278	7.2222	0.7944
1	2004-5-2 AM 09:27:48	74.0371	7.4037	0.740



Info Setup

Point	Point Name
1	Motor 1 radial
2	Motor 1 horizontal
3	Motor 1 vertical
4	Motor 2 radial
5	Motor 2 horizontal
6	Motor 2 vertical
7	Motor 3 radial

Name:

Response:

