



# Thermal Imaging Camera

Online condition monitoring

## DM60

384×288 uncool FPA detector

Temperature measurement



# DM60 Thermal Imaging Camera



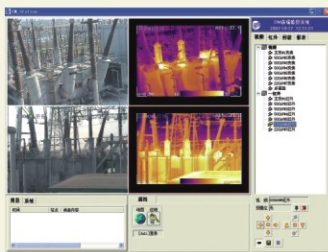
PCB detection

DM60 is an online condition monitoring infrared thermal imaging camera developed with new generation uncooled FPA detector. With high thermal sensitivity, clear IR image, accurate temperature and easy operation, DM60 is suitable for a wide variety of applications of process condition non-contact temperature measure, quick Fault Diagnosis and heat field analysis in field of industry, electricity, electronic condition state detection.



LAN port

DM60



Apply to industry, electricity etc. process stat monitoring



## Parameter

Item		DM60-160	DM60-384
Detector characteristics	Detector type	Uncooled FPA microbolometer	
	Array size/format	160×120	384×288
Image characteristics	Field of view/min focus distance	18°×13°/0.3m	16°×12°/0.5m
	Spatial resolution (IFOV)	1.9mrad	0.88mrad
	Thermal sensitivity	≤0.1°C@30°C	≤0.06°C@30°C
	Frame rate	50/60Hz	
	Focus	Manual electric focus	Auto/Manual electric focus
	Spectral range	8-14μm	
	Temperature ranges	-20°C- +350°C, extend to +600°C	-20°C- +180°C, extend to +600°C
Measurement	Accuracy	± 2 °C or ± 2% of reading, Whichever is greater	
	Measurement correction	Automatic/manual	
	Measurement mode	Up to 4 movable spots. Up to 3 movable areas (maximum, minimum and average temperatures). Line profile. Isotherm. Temperature difference. Alarm(color)	
	Color palette	11 palettes changeable(Iron, Rainbow, Grey and Grey inverted, etc.)	
	Image adjustment	Auto/manual gain and brightness	
	Setup functions	Temperature unit, language, IP address	
	Emissivity correction	Variable from 0.01 to 1.0	
	Ambient temperature correction	Automatic corrections according to user input	
	Atmospheric transmission correction	Automatic correction according to user input object distance, relative humidity, ambient temperature	
	Image storage	Raw image capture	Raw images real time transfer via client control software, the images are analyzable and temperature measurable
Image storage		MPEG-4 Images storage, single Single image capture, BMP	
Power supply	External power	10- 15V DC	
	Power consumption	≤6W(Normal operating at 25°C ambient temperature condition)	
Environment	Operating temperature	-15°C- +50°C	
	Humidity	≤90%non-condensing	
Physical characteristics	Weight	≤1.09Kg ( Exclude lens )	
	Dimensions	224mm ×92mm ×82mm	260mm ×92mm ×82mm
	External DC input	Yes	
Interface	Ana log video output	PAL/NTSC	
	Digital video output	RJ-45 ethernet output, MPEG-4 digital video/raw temperature measured	
	Remote control interface	RS485	
	Ethernet interface	RJ-45 ethernet output for thermal image, data tranfer, and camera control	
	Alarm interface	Switch signal output	

▲ The information contained in this document is subject to change without notice