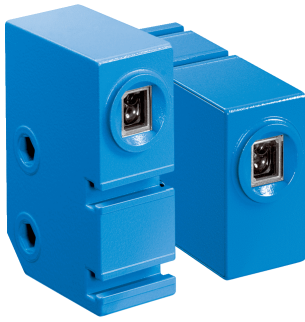


KT6

High-performance and tough metal housing for intelligent contrast detection

CONTRAST SENSORS

SICK
Sensor Intelligence.



Technical data overview

Dimensions (W x H x D)	30.4 mm x 53 mm x 80 mm
Sensing distance	10 mm 10 mm ¹⁾
Type of light	LED ²⁾ RGB
Light spot size	1.5 mm x 6.5 mm
Switching frequency	5 kHz ³⁾
Response time	100 µs
Switching output	PNP NPN (depending on type)
Adjustment	Static 2-point teach-in
Connection type	Male connector M12, 4-pin

- ¹⁾ From front edge of protection ring.
²⁾ Average service life: 100,000 h at T_U = +25 °C.
³⁾ With light/dark ratio 1:1.

Product description

The KT6W-2 is a high-performance sensor with easy setup and at a competitive cost. The RGB, 3-color technology allows even the smallest marks and contrasts to be reliably detected. High-gloss reflective marks are also detected due to the sensor's automatic gloss adjustment feature. A tough, metal housing ensures a long service life and high quality. The teach-in process is simple and easy. All key parameters, such as transmission color, light/dark switching are detected automatically by the sensor. The KT6W-2 is available in two housing versions: the light emission is located on the end or side of the device. This sensor is even more flexible thanks to its wide range of mounting options: Besides sturdy fixing holes, the KT6W-2 devices feature two additional t-sections for mounting.

At a glance

- 3-color, RGB LED technology
- Two-point teach-in (mark and background)
- Tough, metal housing
- Automatic gloss adjustment for highly reflective materials
- 10 mm sensing distance
- Light exits at end or side, based on model
- Common mounting footprint

Your benefits

- 3-color, RGB LED for all registration mark applications – one sensor fits all
- Tough, metal housing for long service life
- Reliable operation, even with high-gloss reflective and jittering materials
- Easy setup – detect all marks with one sensor

Ordering information

Other models and accessories → www.sick.com/KT6

- **Adjustment:** Teach-in button
- **Teach-in mode:** Static 2-point teach-in
- **Light source:** LED, RGB (Average service life: 100,000 h at $T_U = +25\text{ °C}$.)

Sensing distance	Switching output	Light spot size	Connection type Detail	Light emission	Type	Part no.
≤ 10 mm	NPN	1.5 mm x 6.5 mm	Male connector M12, 4-pin	Long side of housing	KT6W-2N6116	1046012
				Short device side	KT6W-2N5116	1046010
	PNP	1.5 mm x 6.5 mm	Male connector M12, 4-pin	Long side of housing	KT6W-2P6116	1046014
				Short device side	KT6W-2P5116	1046013

- **Light source:** LED, RGB (Average service life: 100,000 h at $T_U = +25\text{ °C}$.)

Sensing distance	Switching output	Light spot size	Connection type Detail	Light emission	Type	Part no.
≤ 10 mm	NPN	1.5 mm x 6.5 mm	Male connector M12, 4-pin	Long side of housing	KT6W-N6116	1028182
				Short device side	KT6W-N5116	1027499
	PNP	1.5 mm x 6.5 mm	Male connector M12, 4-pin	Long side of housing	KT6W-P6116	1028183
				Short device side	KT6W-P5116	1027500

SICK AT A GLANCE

SICK is one of the leading manufacturers of intelligent sensors and sensor solutions for industrial applications. A unique range of products and services creates the perfect basis for controlling processes securely and efficiently, protecting individuals from accidents and preventing damage to the environment.

We have extensive experience in a wide range of industries and understand their processes and requirements. With intelligent sensors, we can deliver exactly what our customers need. In application centers in Europe, Asia and North America, system solutions are tested and optimized in accordance with customer specifications. All this makes us a reliable supplier and development partner.

Comprehensive services complete our offering: SICK LifeTime Services provide support throughout the machine life cycle and ensure safety and productivity.

For us, that is “Sensor Intelligence.”

WORLDWIDE PRESENCE:

Contacts and other locations –www.sick.com