



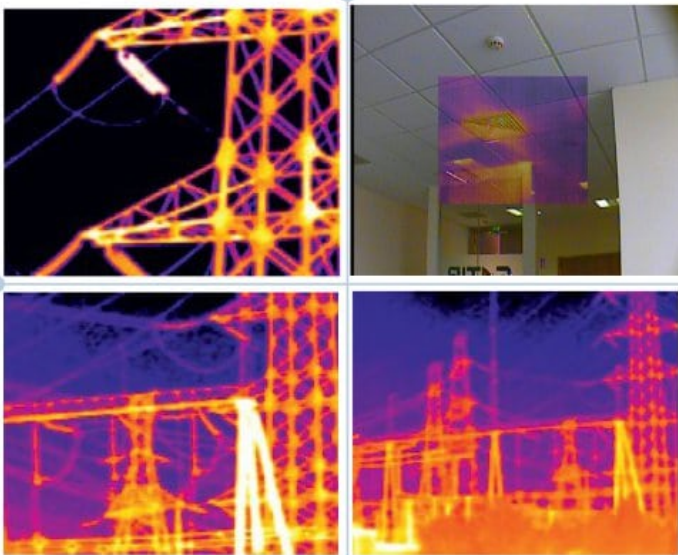
### **SATIR Hotfind L-R**

#### *High Performance IR Camera*

The Hotfind L-R is from our Hotfind series which has been designed for use in tough factory working environments. It can withstand vibration, dust and water, fully certified to meet IP54 encapsulation. It was designed with the user in mind as users can adjust the angle of the LCD for the best viewing position to suit the user. It can take high "Duo Vision" images which allows the thermal image to overlay on the original digital image and it can also measure temperatures.

#### **Features**

- High Frame Rate in real time
- Extendable Temperature Range
- Measurement Features
- Various Optional Lenses Available
- Duo-Vision Technology
- Bluetooth
- USB Real Time Thermal Video Recording
- Tripod Mounting
- 3.5" Tilting LCD Screen



Marley's Business Park, Marley's Lane, Drogheda, Co. Louth, Ireland

**Tel:** + 353 (41) 9846786

**Email:** enquiry@satir.com

**Website:** www.satir-eu.com



Camera Name	Hotfind L-R
Resolution	384x288
Thermal Sensitivity (N.E.T.D)	<0.05°C @30°C
Detector Type	UFPA
Spectral Range	8~14 μm
Field of View	24°x21°/ 0.1m minimum focus distance
Focus Mechanism	Manual
Measurement	
Temperature Range	-20°C~+250°C up to +1500°C
Accuracy	±2°C, ±2% of readings
Measurement Tools	9 movable spots, auto got/cold spot, profile, 5 area boxes, isotherm
Temperature Alarms	Yes
Measurement Corrections	Emissivity, Ambient Temperature, Distance, Relative Humidity
Environmental	
Operating	-20°C to +50°C
Storage	-40°C to +70°C
Humidity	10% to 95%, non-condensing
Encapsulation	IP54
Physical Characteristics (Camera Body)	
Weight	Less than 600g
Dimensions	215mmX80mmX219mm
Interfaces	
Power Input	DC 8V-11V
Video Output	NTSC (60Hz) or PAL (50Hz) Composite Video
Optional Parts	
Available Lenses	12° 48°

Please be aware specifications can vary from time to time

Marley's Business Park, Marley's Lane, Drogheda, Co. Louth, Ireland

**Tel:** + 353 (41) 9846786

**Email:** enquiry@satir.com

**Website:** www.satir-eu.com

Datasheet 22072016