

TECHNICAL DATA

Fluke Networks TS100-PRO-BT-TDR Cable Fault Finder with Bridge Tap Detect



Key features

- Reports distance to multiple bridge taps up to 3,200 feet (975 m)
- Includes test leads with ABN and piercing pin clips
- Tests opens and shorts up to 8,000 feet (2.4 km)
- SmartTone for exact pair identification, built-in TDR and toner
- AC/DC voltage detection, one-button testing

Product overview: Fluke Networks TS100-PRO-BT-TDR Cable Fault Finder with Bridge Tap Detect

Fluke Networks Cable fault finder with PowerBT™ Bridge Tap Detect provides open/short circuit detection—to 8,000 feet (2.4 km) and locates multiple bridge taps up to 3,200 feet (975 m) of cable, built-in toner has five tones and patented SmartTone® for exact pair identification, reports AC/DC voltage on any two conductor, telephone, security wires, or coax cables.

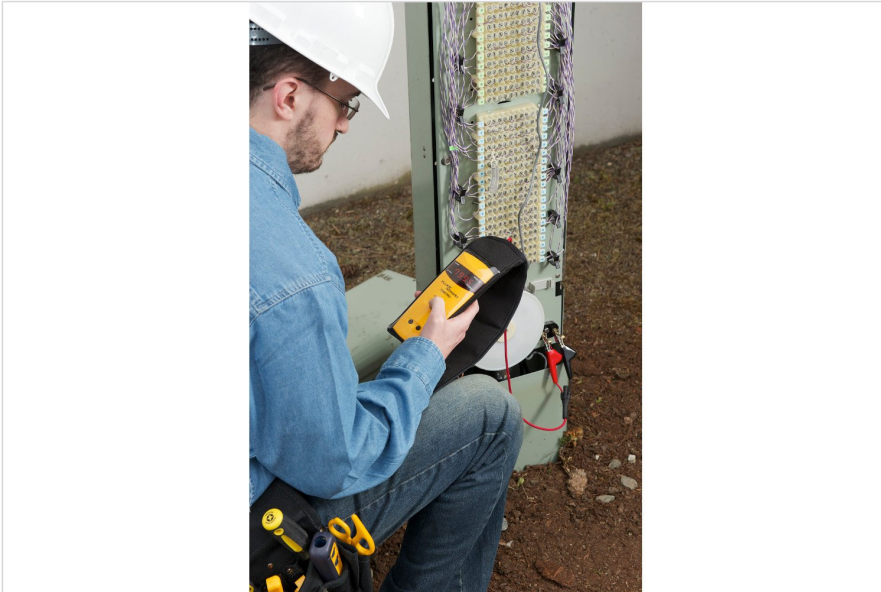
Specifications: Fluke Networks TS100-PRO-BT-TDR Cable Fault

Finder with Bridge Tap Detect

Maximum Length	8,000 feet (2,438 meters) on certain cable types, 4,000 feet (1,220 meters) on most cable types, and 500 feet (152 meters) on cables with high loss. The tester shows -Err if the cable is too long to be correctly measured.
Representative Maximum Cable Length	8,000 feet (2,438 meters): CAT-3 Twisted Pair 8,000 feet (2,438 meters): CAT-5 Twisted Pair 6,000 feet (1,830 meters): 12/2 AC Wire 3,000 feet (900 meters): RG-6/U TV Coax 1,500 feet (457 meters): RG-174/U Coax
Minimum Length	No minimum length (can read a bridge tap at 0 feet/meters). Minimum non-zero reading is 2 feet or 1 meter.
Length Accuracy	"±2 feet (±0.6 m) for cables less than 10 feet (3 m) ±5 feet (±2 m) for cables longer than 10 feet (3 m) and shorter than 200 feet (60 m) +/-3%/+/-5 feet (±2 m) for cables longer than 200 feet (60 m)"
Distance to Bridge Tap	0 feet to 3,200 feet (975 meters)
Minimum Length of Bridge Tap	10% of the distance to the bridge tap. Dependent on the cable characteristics.
Measurement Rate	Maximum of 4 complete measurements per second, decreasing to 2 seconds per measurement based on cable size and uniformity.
VOP	Adjustable from 20 to 99, saved in flash memory.
Test Technology	Time Domain Reflectometry (TDR) with 100 Ω drive impedance, 6v maximum pulse height.
Cable Type	Virtually all two or more conductor cables.
Power	4 AA alkaline batteries.
Reverse Battery Protection	No damage to the tester will occur if the batteries are installed backwards.
Battery Life	35 hours (typical)
Low Battery Indication	LED display alternates between LO and bAtt when the battery voltage falls below 4.5v.
Maximum Output Voltage	4 voltage peak
Maximum Isolation Voltage	250 volts RMS
Voltage Measurements	Range: 0 volts AC to 115 volts AC; 0 volts DC to ±150 volts DC Accuracy: AC: +/-1%/+/-2 volts (45 Hz to 65 Hz); DC: +/-1%/+/-2 volts DC
High Voltage Detection	AC voltage detected to 115 volts; DC voltage detected to ±150 volts. AC voltage ≥90 volts or DC voltage ≥100 volts causes high voltage warnings to show on the display
SmartTone® (5-tones) Range	7,000 feet (2,134 meters)
Toner Range	52,800 feet (16,093 meters)
Tone Injection	Approximately 1 kHz at an amplitude of 80% of battery voltage. Variable frequency and cadence. Tone characteristics change as cable condition changes to "normal-open" from any other condition.
Impedance Range	35 Ω to 330 Ω with auto-compensation within this range. Cables with impedances outside this range will not be properly tested and may produce erratic or incorrect readings.

Temperature Range	Operating: 32°F to 104°F (0°C to 40°C) Storage: 32°F to 131°F (0°C to 55°C)
Humidity	Operating: 20% to 80% relative humidity Storage: 0% to 100% relative humidity
Operating Humidity	80% maximum at 86°F (30°C) 50% maximum at 104°F (40°C)
Operating Altitude	9,843 ft max (3,000 m max)
Weight	1 lb (454 grams)
Dimensions	7.4 in x 2.7 in x 1.4 in (18.8 cm x 6.9 cm x 3.6 cm)
Safety	IEC 61010-1:2010; N10140 EMC: IEC/EN61326-1:2006
Certifications and Compliance	Conforms to relevant European Union directives Conforms to relevant Australian standards IEC/EN61010-1 CAN/CSA-C22.2 No. 1010.1-92 + CSA-C22.2 No. 1010.1B-97, UL/ANSI 3111-1
Notes: Patents 6160405, 6285195, 6323654, and 6509740. Specifications subject to change without notice.	

Ordering information



TS100-PRO-BT-TDR

Fluke Networks TS100-PRO-BT-TDR Cable Fault Finder with Bridge Tap Detect

Includes:

- Test leads with ABN
 - Piercing pin clips
-



Fluke. *Keeping your world up and running.®*

Fluke Corporation
PO Box 9090, Everett, WA 98206 U.S.A.

For more information call:
In the U.S.A. (800) 443-5853
In Canada (800) 36-FLUKE
From other countries +1 (425) 446-5500
www.fluke.com

©2022 Fluke Corporation.
Specifications subject to change without notice.
03/2022

**Modification of this document is not permitted
without written permission from Fluke Corporation.**