

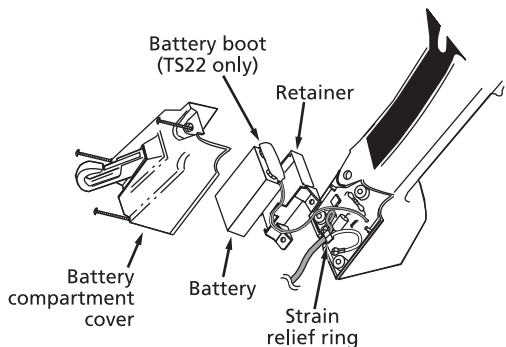
## Replacing the Monitor Speaker Battery

A 9 V alkaline battery powers the Amplified Speaker or Speakerphone. If the battery is low, the test set will not enable the TALK (off-hook) mode. Replace the battery if the test set does any of the following:

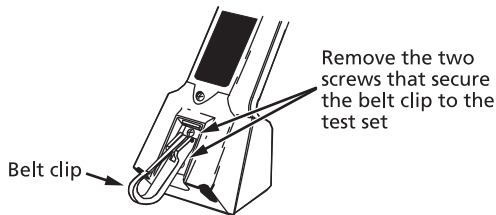
- Fails to operate
- Operates intermittently
- Sounds distorted

### To replace the battery

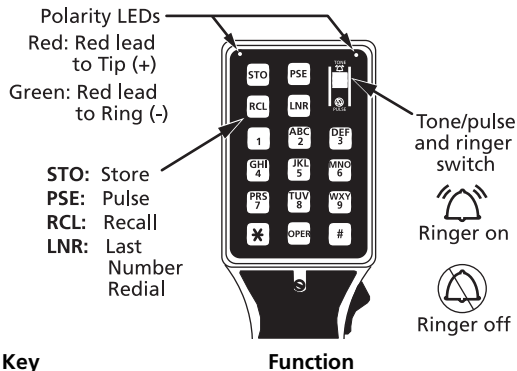
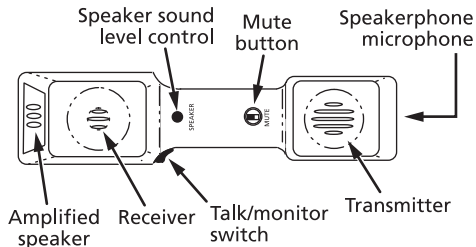
- 1 Remove the three screws from the battery cover.
- 2 Remove the battery cover.
- 3 Lift out the battery retainer.
- 4 Remove the battery from the battery boot and install a new alkaline or lithium 9 V battery.
- 5 Replace the battery boot, retainer, cover, and screws. Strain relief ring must be inside the case as shown. Avoid pinching the battery wires.



## Replacing the Belt Clip



## TS®22/TS®22A Test Set Users Card



### Key

### Function

**STO** Stores the last number dialed in memory. (18 digits maximum; 9 locations).

**PSE** Places a 4-second pause between numbers being entered into memory. The pause occurs when the stored numbers are redialed, and is used to access second dial tone when dialing through a PBX.

**RCL** Recalls a number stored in memory.

**LNR** Redials the last number called. This feature works in Tone or Pulse modes.

## Basic Operation

- 1 Select the dial signaling required (touch tone or pulse) with the **TONE/PULSE** switch.
- 2 Set the TALK/MONITOR switch to **M** and connect the test set to the line. Listen to verify the line is idle. The test set's high impedance prevents disruption of data traffic when connected to a line in monitor mode.
- 3 Set the TALK/MONITOR switch to **T**, and verify that dial tone is received.
- 4 Dial the number to be called. To terminate the call during or after dialing, set the TALK/MONITOR switch to **M**.

## Last Number Redialed

In Tone or Pulse mode, the last number dialed can be redialed by pressing the **LNR** key after going on-hook (MONITOR) and then back off-hook (TALK).

*Note: When dialing out through a PBX, you may use the **PSE** key to insert a pause before initially dialing the number.*

## Storing Numbers In Memory (Auto Dialer)

- 1 Press **STO** (STORE).
- 2 Press the number for the desired memory location (1-9).
- 3 Enter the number to be stored (18 numbers maximum).

*Note: If a pause is needed (as for a PBX), press the **PSE** key where a pause is necessary.*

- 4 Press **STO** (STORE).
- 5 Press the number for the desired memory location (1-9).

## Storing a Number You Are Calling

- 1 Connect the test set to the line and receive dial tone.
- 2 Dial the number.
- 3 Press **STO** (STORE).
- 4 Press the number for the desired memory location (1-9).

*Note: In Pulse mode, pressing **STO** (STORE) stops any further digits from being outpulsed, although all digits will be stored. Therefore, wait until all digits have been outpulsed before pressing **STO**.*

## TS22 Amplified Speaker Mode

- 1 Connect the test set to the line, put the test set in TALK (**T**) mode, and receive dial tone.
- 2 Press the **SPEAKER** button once for Amplified Speaker mode at low volume. The transmitter and receiver automatically turn off when the speaker is on to prevent acoustic feedback.
- 3 Press the **SPEAKER** button a second and third time for medium and high volumes.
- 4 Press the **SPEAKER** button a fourth time to turn the speaker off and return to TALK mode.

*Note: When the speaker is on, the polarity LEDs are off. They turn back on when the speaker timer elapses or is turned off with the **SPEAKER** button.*

## TS22A Speakerphone Mode

- 1 Connect the test set to the line, put the test set in TALK (**T**) mode, and receive dial tone.
- 2 Press the **SPEAKER** button once for Speakerphone mode at low volume.
- 3 Press the **SPEAKER** button a second and third time for medium and high volumes.
- 4 Press the **SPEAKER** button a fourth time to turn the speakerphone off and return to TALK mode.

*Notes: (1) Pressing the **MUTE** button while in Speakerphone mode mutes the transmit microphone for privacy. (2) When using Speakerphone mode in noisy environments, it may be helpful to temporarily lock the **MUTE** button while listening; then unlock it to talk.*

To prolong battery life, the TS22A shuts off the speakerphone after about 5 minutes when there has been no signal greater than -30 dBm. Speakerphone mode must be reactivated every 5 minutes if no signal greater than -30 dBm is detected.